



22125204



International Baccalaureate®
Baccalauréat International
Bachillerato Internacional

**GEOGRAPHY
HIGHER LEVEL AND STANDARD LEVEL
PAPER 2 – RESOURCES BOOKLET**

Monday 7 May 2012 (morning)

INSTRUCTIONS TO CANDIDATES

- Do not open this resources booklet until instructed to do so.
- Use the resources as appropriate to the questions in paper 2.

Optional Theme A — Freshwater – issues and conflicts

- 2. The map extract shows an area in western Mexico. The scale of the map is 1:250 000 and the contour interval is 100 metres.



[Source: Extract from a map of Tepic, Mexico (F13 – 8), produced by Instituto Nacional de Estadística y Geografía (INEGI), www.inegi.org.mx

CONTOUR INTERVAL 100 METRES

SCALE FOR MAP 1:250 000



KEY/LEGEND FOR MAP

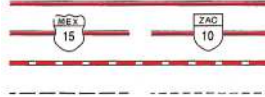
POPULATIONS

- LOCALITY _____ ○
- WITH MORE THAN 500 000 INHABITANTS _____ **CHIHUAHUA**
- 50 001 TO 500 000 INHABITANTS _____ **ZAMORA**
- 15 001 TO 50 000 _____ **AGUA PRIETA**
- 2501 TO 15 000 _____ Nicolás Bravo
- LESS THAN 2501 INHABITANTS _____ **La Misión**
- TEMPORARY LOCATION OR NAME OF PLACE _____ □ Buenavista



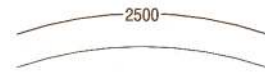
TERRESTRIAL ROUTES

- PAVED ROAD _____
- STATE OR FEDERAL ROAD NUMBER SIGNPOSTING _____
- UNPAVED ROAD/DIRT TRACK _____
- BREACH, PATH _____



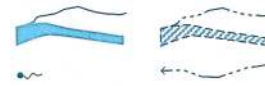
REPRESENTATION OF THE RELIEF

- CONTOUR LINE IN METRES _____
- NORMAL CONTOUR LINE _____



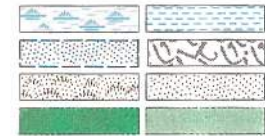
HYDROGRAPHIC CHARACTERISTICS

- BODY OF WATER: PERENNIAL, INTERMITTENT _____
- SPRING, DISAPPEARING CURRENT _____



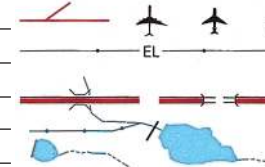
OTHER AREAS

- MARSH, LAND SUBJECT TO FLOODING _____
- SALT MINES, MALPAIS _____
- DUNES, SANDY AREA _____
- DENSE VEGETATION, GREEN URBAN AREA _____



OTHER CULTURAL CHARACTERISTICS

- RUNWAY, AIRPORT: INTERNATIONAL, NATIONAL, LOCAL _____
- ELECTRIC TRANSMISSION LINE WITH ELECTRICITY PYLONS _____
- BRIDGE, TUNNEL _____
- CANAL, DAM _____
- BORDER (EARTH RIDGE FOR CONTROLLING FLOW OF IRRIGATION) _____



Optional Theme B — Oceans and their coastal margins

3. The map shows surface ocean currents in the Atlantic Ocean in January.

Content removed for copyright reasons.

Optional Theme C — Extreme environments

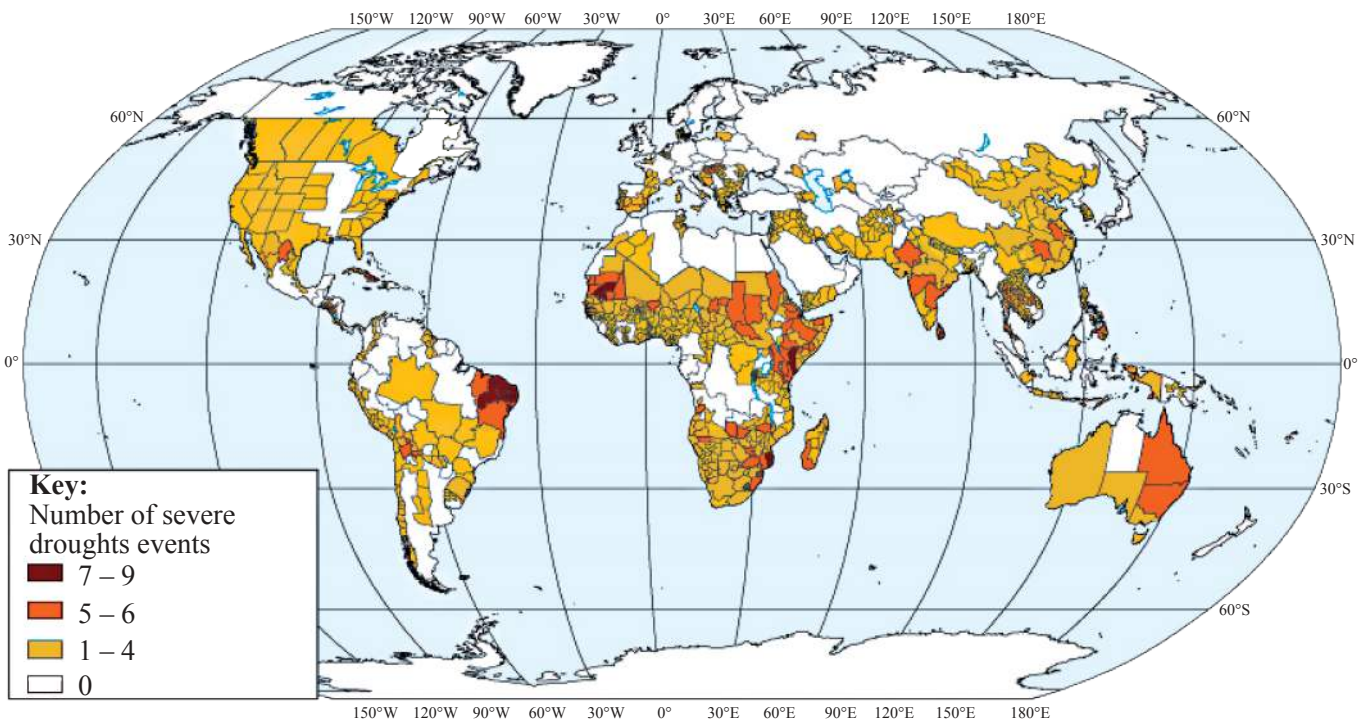
5. The photograph shows a periglacial landscape in southern Iceland.



[Source: Copyright Bruce Molnia, Courtesy Earth Science World Image Bank (<http://www.earthscienceworld.org/images/>)]

Optional Theme D — Hazards and disasters – risk assessment and response

7. The map shows the world distribution of severe drought events from 1974 to 2004.



[Source: http://www.preventionweb.net/files/10600_Figure226.jpg]

Optional Theme E — Leisure, sport and tourism

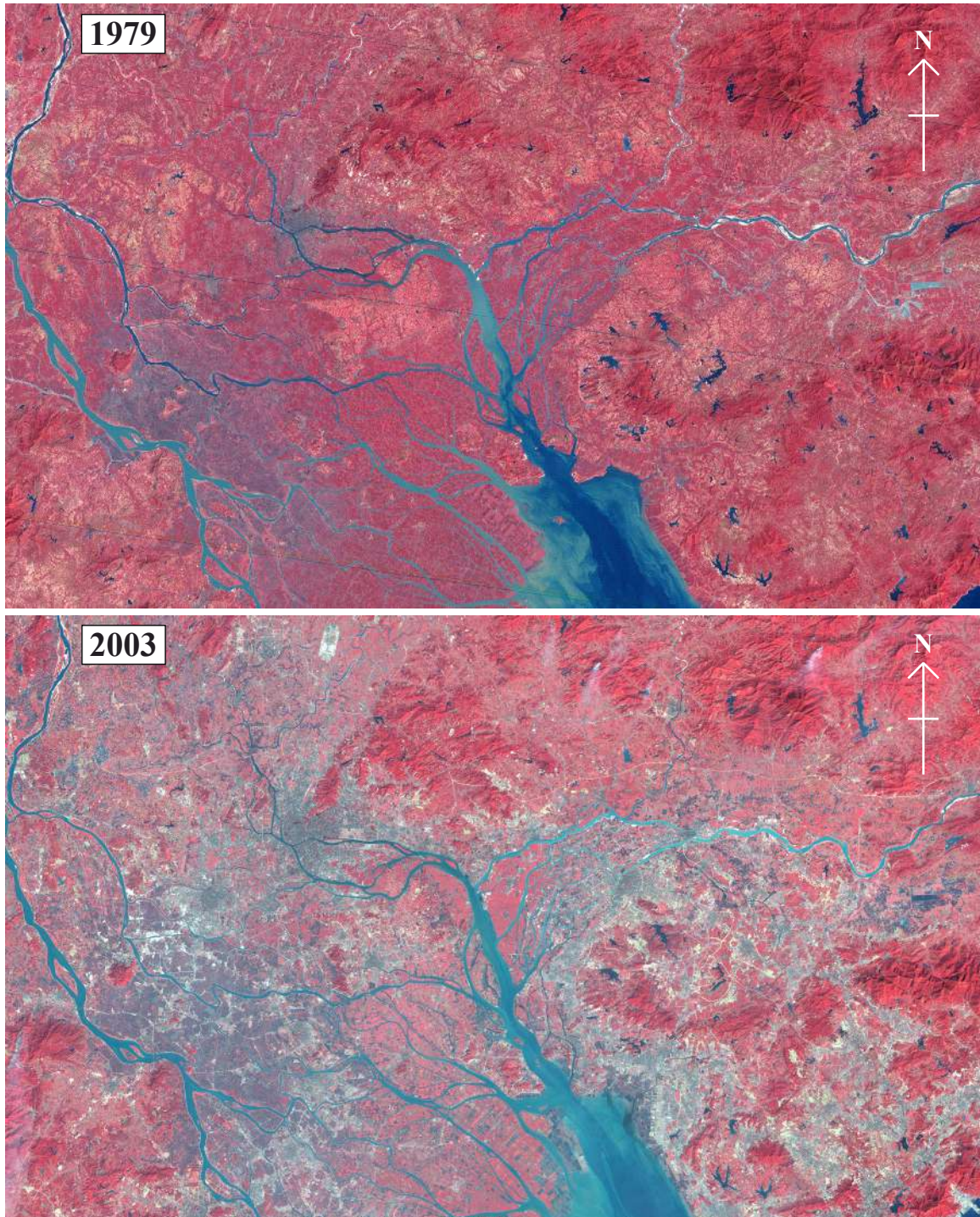
9. The map shows an area in Utah, USA, where tourism is important.



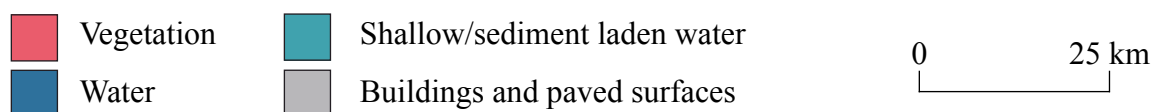
[Used with permission]

Optional Theme G — Urban environments

13. The false-colour satellite images compare the Pearl River Delta in southern China in 1979 and 2003.



Key:



[Source: First image: Jesse Allen, 1979, Landsat 3 MSS, pearlriver_13_1979292, GLCF, Maryland, 2012;
Second image: Jesse Allen, 2003, Landsat 7 ETM+, pearlriver_17_2003010, GLCF, Maryland, 2012]